

Ciao, Baby! Masculine Card Set



Thank you, and enjoy your tutorial! For questions and to purchase Stampin' Up! products, please contact me:

Kim Skinner

<http://stampingimperfection.com>

email: kim@stamingimperfection.com

Overview

Welcome to the tutorial for the Ciao, Baby! Masculine Card Set.

Do you get frustrated trying to make the perfect masculine cards for birthdays, Valentine's Day, and other occasions? Worry no more – with this tutorial, you have the challenge beat!

Combine the bold graphic patterns and colors of the Parker's Patterns Designer Series Paper to create stylish cards. These cards were designed with the men in your life in mind, but you'll find they are great for anyone. With this bold set, you'll have those hard-to-design masculine cards on hand for special occasions. Enjoy!

In this class, you will make:

- 4 Cards
- 1 Envelope-Style Card Box

This class includes:

<http://stampingimperfection.com>

Artwork © Stampin' Up!®

1

- Envelope-Style Card Box Tutorial

Table of Contents

Overview	1
Table of Contents.....	2
Non-Consumable Supplies.....	2
Consumable Supplies	3
Accessories & Adhesives	3
Paper & Ribbon	3
Non-Stampin' Up! Supplies.....	3
Instructions.....	4
Cutting Instructions.....	4
Envelope-Style Card Box Tutorial	5
Envelope-Style Card Box Instructions	6
Card 1 Instructions (Award Ribbon).....	8
Card 2 Instructions (Punch Strip)	10
Card 3 Instructions (Punch Grid).....	12
Card 4 Instructions (Banner)	14
Templates.....	16
Envelope-Style Card Box Template.....	16
Detail Photos.....	17
More Samples	19
Bonus Ideas	20

Stamping Imperfection

Non-Consumable Supplies

Item#	Item Description	✓	Item#	Item Description	✓
129645	Ciao, Baby! stamp set (Wood)		126974	Classic Ink Pad – Early Espresso	
129648	Ciao, Baby! stamp set (Clear)				
Asst.	Clear-Mount Stamp Blocks (optional)		126966	Classic Ink Pad – Cherry Cobbler	
121779	Clear Block Cleaning Cloth (optional)		126971	Classic Ink Pad – Not Quite Navy	
103579	Paper Snips		120906	2-1/2" Circle Punch	
101049	Stamp-a-ma-jig (optional)		119860	1-3/8" Circle Punch	
122334	Simply Scored Scoring Tool		119868	1" Circle Punch	
125586	Simply Scored Diagonal Plate		119851	Curly Label Punch	
102300	Bone Folder		129405	Petite Curly Label Punch (Sale-a-Bration 2013 item that will be available from the catalog afterwards)	
126889	Paper Trimmer		129404	7/8" Scallop Circle Punch	
113439	Big Shot w/ Multipurpose Platform		118874	2-3/8" Scallop Circle Punch	
127749	Textured Impressions Embossing Folder - Chevron		126189	Paper-Piercing Tool	
			126199	Stampin' Pierce Mat	

Consumable Supplies from Stamping Imperfection

Accessories & Adhesives

Item#	Item Description	Approx. Amount	✓
122941	1/8" Mini Brads	4/set	
107300	Medium Envelopes – Very Vanilla	4/set	
104331	SNAIL Refill	82"/set	
104430	Stampin' Dimensionals	18/set	
103683	Glue Dots	3/set	
104294	Sticky Strip	14"/set	



Paper & Ribbon

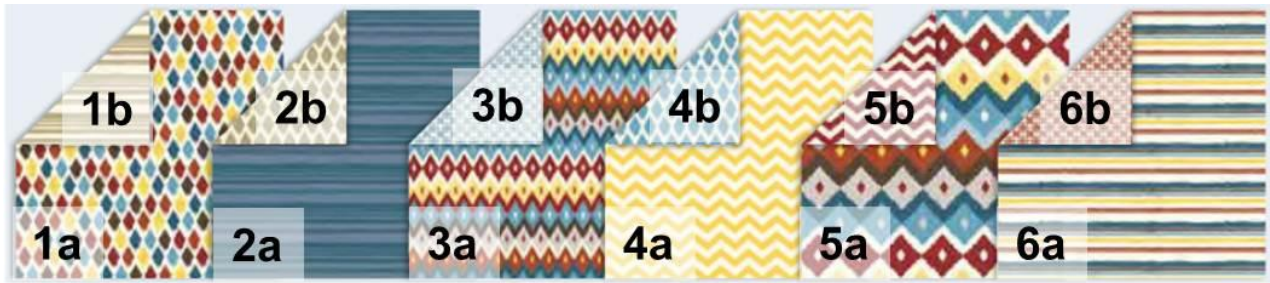
Item#	Item Description	Approx. Amount	Pieces	Measurements	✓
131021	Parker's Patterns Designer Series Paper	1/6 pkg.	N/A	See Cutting Instructions	
124274	12" x 12" Card Stock – Crumb Cake	1 sheet	1	9-1/2" x 9-1/2" – Box	
			1	Scrap for punching (about 2" x 3") – Card 2	
			1	Scrap for punching (about 2" x 2") – Card 4	
120953	8-1/2" x 11" Card Stock – Crumb Cake	1/2 sheet	1	5-1/2" x 8-1/2" – Card 3	
119686	8-1/2" x 11" Card Stock – Early Espresso	7/8 sheet	2	4" x 5-1/4" – Cards 1 & 3	
			1	3-7/8" x 5-1/8" – Card 2	
			1	1-1/8" x 5" – Card 2	
			1	Scrap for punching (about 1" x 3") – Card 2	
101650	8-1/2" x 11" Card Stock – Very Vanilla	1-2/3 sheet	3	4" x 5-1/4" – Cards 1, 2 & 4	
			2	3-3/4" x 5" – Cards 2 & 3	
			1	1-1/4" x 5-1/4" – Card 4	
			5	Scrap for punching (about 2" x 2") – Box & Cards 1-4	
			1	Scrap for punching (about 1" x 1") – Card 3	
119683	8-1/2" x 11" Card Stock – Daffodil Delight	1/88 sheet	1	Scrap for punching (about 1" x 1") – Card 3	
119682	8-1/2" x 11" Card Stock – Marina Mist	1/10 sheet	2	1" x 4-1/4" – Card 1	
			1	Scrap for punching (about 2" x 2") – Card 1	
119685	8-1/2" x 11" Card Stock – Cherry Cobbler	1-1/2 sheet	2	5-1/2" x 8-1/2" – Cards 2 & 4	
			1	1" x 5" – Card 2	
			1	Scrap for punching (about 3" x 4") – Card 1	
			3	Scrap for punching (about 2" x 2") – Box & Cards 2 & 4	
			1	Scrap for punching (about 1" x 1") – Card 3	
101722	8-1/2" x 11" Card Stock – Not Quite Navy	5/8 sheet	1	5-1/2" x 8-1/2" – Card 1	
			1	Scrap for punching (about 3" x 3") – Card 1	
			1	Scrap for punching (about 1" x 1") – Card 3	
129287	Natural 7/16" Trim Ribbon	20-1/2"	1	14" piece – Card 3	
			1	5" piece – Card 4	
			1	1-1/2" piece – Card 2	

Non-Stampin' Up! Supplies

Item#	Item Description	Pieces	Measurements	✓
N/A	N/A	N/A	N/A	

Instructions from Stamping Imperfection

Cutting Instructions



Cut the Designer Series Paper (DSP) following the instructions below.

Each package of Designer Series Paper includes:

12 sheets of 12" x 12" double-sided patterned paper (2 each of 6 double-sided designs)

For these projects, 1/6 of a package of Designer Series paper is enough to complete the set.

Designer Series Paper (DSP) used:

Pattern 1:

1a: Scrap for punching (about 1" x 1") – Card 3

Pattern 2:

*2a: 1 1-1/4" x 3-1/2" – Card 4
 Scrap for punching (about 1" x 1") – Card 3
 *Cut with stripes parallel to 1-1/4" side

Pattern 3:

3a: Scrap for punching (about 1" x 1") – Card 3

Pattern 4:

4a/b: Scrap for punching (about 1" x 2") – Card 3
 *4a: 1 1-1/2" x 4-1/2" – Card 4
 *Cut with zigzag parallel to 1-1/2" side

Pattern 5:

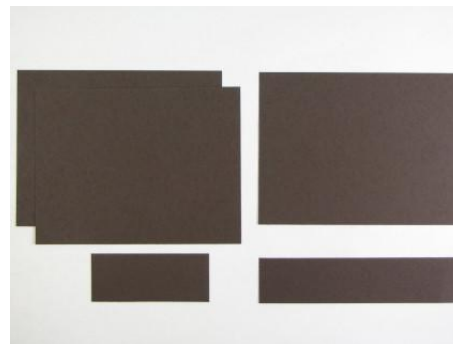
5a/b: Scrap for punching (about 1" x 2") – Card 3
 *5b: 1 3-3/4" x 5" – Card 1
 *Cut with zigzag parallel to 3-3/4" side

Pattern 6:

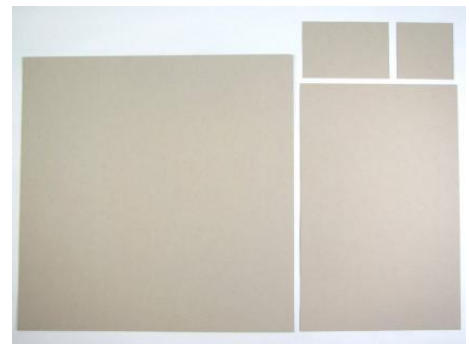
6a: Scrap for punching (about 1" x 1") – Card 3



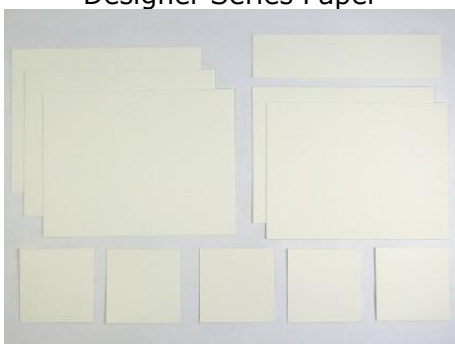
Parker's Patterns
Designer Series Paper



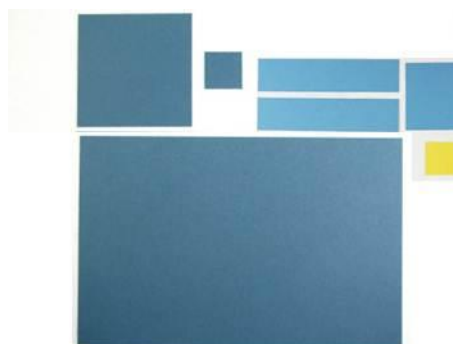
Early Espresso Card Stock



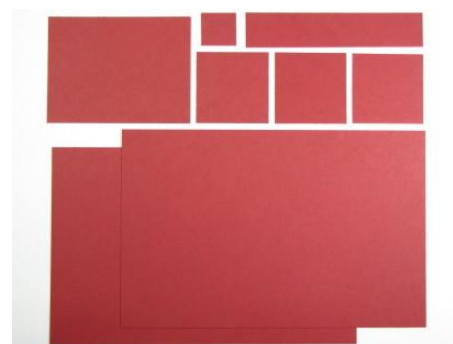
Crumb Cake Card Stock



Very Vanilla Card Stock

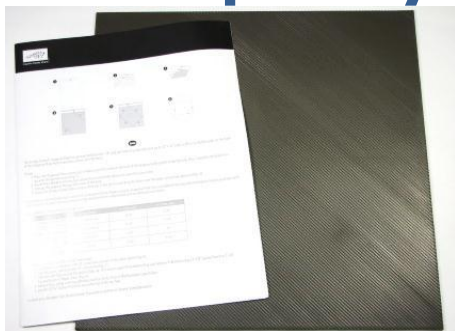


Not Quite Navy & Daffodil Delight
Card Stock



Cherry Cobbler Card Stock

Envelope-Style Card Box Tutorial



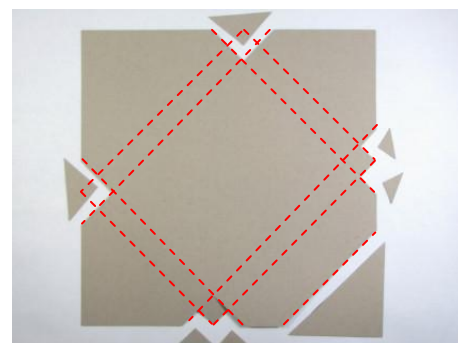
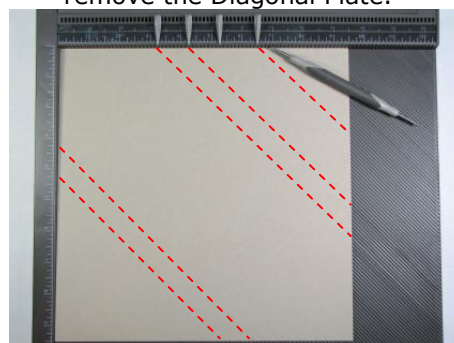
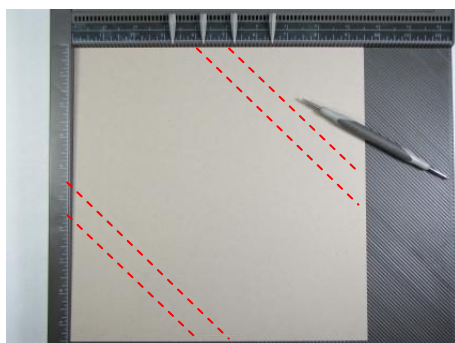
1. The Simply Scored Scoring Tool has become a fan favorite, and it just got better with the addition of the Diagonal Plate!

The Diagonal Plate sets on the Simply Scored scoring surface - making one multipurpose tool!

2. The back of the Diagonal Plate has an arrow at the top. Point the arrow towards top of Simply Scored tool and the same 1/8" score lines work on the Diagonal Plate! The rubbery grips on back hold it firmly in place for scoring and allows you to easily add or remove the Diagonal Plate.

3. The Simply Scored and the Diagonal Plate fit paper up to 12" x 12" and have score lines at every 1/8" so your creativity has no limits!

Making boxes and envelopes is easier and more fun than ever!

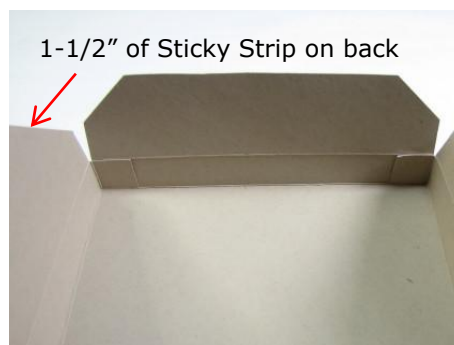


4. To create an Envelope-Style Card Box using the Simply Scored and Diagonal Plate, begin by scoring 9-1/2" x 9-1/2" card stock at 4-1/4" and 5-1/4" then rotate card stock 180 degrees and score again at the same measurements.

5. Rotate the card stock 90 degrees. Score at 3-1/4" and 4-1/4". Rotate card stock 180 degrees and score at the same measurements. Also score only this one side at 6-1/2".

6. Use Paper Snips to cut the 6 triangular sections shown on the template.

Cut along the one line scored at 6-1/2" using Paper Snips or Paper Trimmer to create the bottom flap of the box.



7. Add Sticky Strip to the very edge of the bottom flap and the small side flaps.

Add 1-1/2" of Sticky Strip to the bottom half of the bottom diagonal edge of the side flaps.

8. Fold up bottom flap and adhere small flaps to the inside of the smaller scored section.

9. Fold side flaps in towards center so the tips just meet. Press from inside to adhere.

Close the box by sliding the tip of the top flap under the top edge of the bottom flap.

Envelope-Style Card Box Instructions



Stamps: Ciao, Baby!

Ink: Early Espresso, Cherry Cobbler, & Not Quite Navy

Crumb Cake 12" x 12" Card Stock

1 9-1/2" x 9-1/2" - Box

Very Vanilla Card Stock

Scrap for punching (about 2" x 2") - Box

Cherry Cobbler Card Stock

Scrap for punching (about 2" x 2") - Box

Other

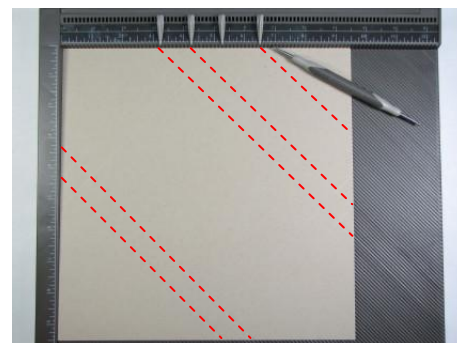
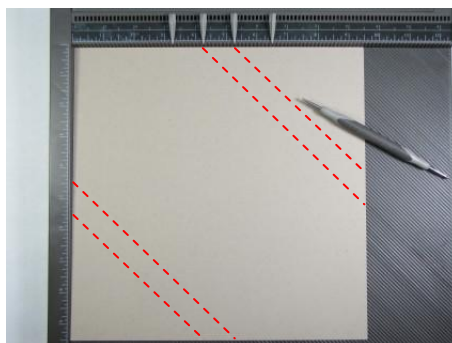
Punches: 7/8" Scallop Circle & 1" Circle

Simply Scored & Diagonal Plate

Big Shot w/ Multipurpose Platform (optional)

Chevron Textured Impressions Embossing Folder (optional)

Adhesives: SNAIL (2") & Sticky Strip (14")



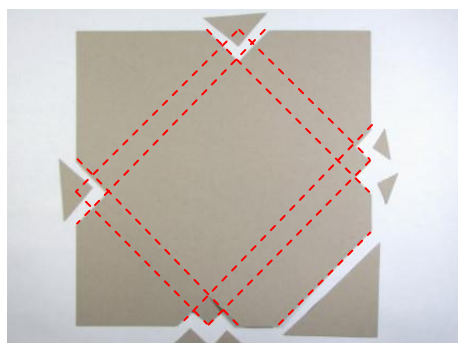
1. Gather supplies listed.

Score Crumb Cake card stock following Envelope-Style Card Box Template using the Simply Scored and Diagonal Plate.

2. Score card stock at 4-1/4" and 5-1/4" then rotate card stock 180 degrees and score again at the same measurements.

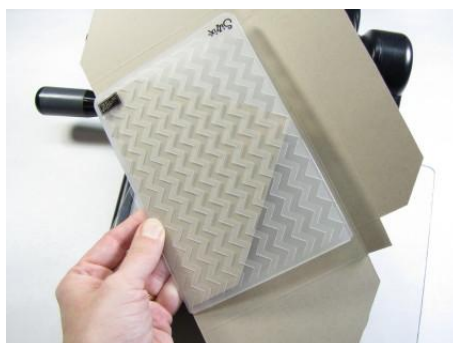
3. Rotate the card stock 90 degrees.

Score at 3-1/4" and 4-1/4". Rotate card stock 180 degrees and score at the same measurements. Also score only this one side at 6-1/2".



4. Use Paper Snips to cut the 6 triangular sections shown on the template.

Cut along the one line scored at 6-1/2" using Paper Snips or Paper Trimmer to create the bottom flap of the box.



5. **OPTIONAL:** Place the two sections of the top flap into the Chevron Textured Impressions Embossing Folder.

Fold side flaps flat and the bottom two sections folded over the Embossing Folder.



6. Layer the Embossing Folder between 2 Cutting Pads. Place on Multipurpose Platform with both tabs folded open. Run through the Big Shot to emboss the top flap.



7. Stamp "#1" image twice on scrap Very Vanilla card stock with Not Quite Navy ink.

Punch stamped images with 7/8" Scallop Circle Punch.

Punch scrap Cherry Cobbler card stock with 1" Circle Punch.



8. Punch Stamp "Love" image onto bottom left corner of solid front section with Cherry Cobbler and Early Espresso ink.

NOTE: Be sure to clean stamp before changing colors.



9. Adhere one punched scallop circle between the two stamped "Love" images with SNAIL.

Adhere the second scallop circle to the 1" circle with SNAIL.



10. Add Sticky Strip to the very edge of the bottom flap and the small side flaps.

Add 1-1/2" of Sticky Strip to the bottom half of the bottom diagonal edge of the side flaps.



1-1/2" of Sticky Strip on back



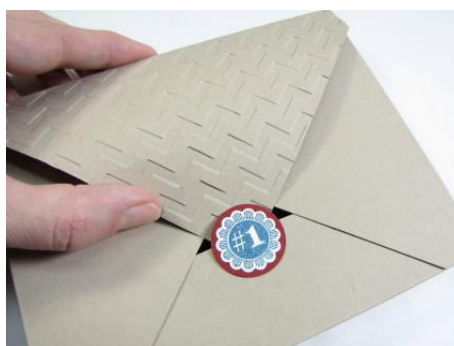
11. Fold up bottom flap and adhere small flaps to the inside of the smaller scored section.

12. Fold side flaps in towards center so the tips just meet. Press from inside to adhere.



13. Add Sticky Strip to the bottom half of the Cherry Cobbler layered circle.

Adhere over center of bottom flap for decoration.



14. Close the box by sliding the tip of the top flap under the top edge of the bottom flap.



15. Fill the box with cards and envelopes, recipe cards, photos, or other small treats.

Card 1 Instructions (Award Ribbon) Stamping Imperfection



Stamps: Ciao, Baby!

Ink: Not Quite Navy

Early Espresso Card Stock

1 4" x 5-1/4" – Card 1

Very Vanilla Card Stock

1 4" x 5-1/4" – Card 1

Scrap for punching (about 2" x 2") – Card 1

Cherry Cobbler Card Stock

Scrap for punching (about 3" x 4") – Card 1

Not Quite Navy Card Stock

1 5-1/2" x 8-1/2" – Card 1

Scrap for punching (about 3" x 3") – Card 1

Marina Mist Card Stock

2 1" x 4-1/4" – Card 1

Scrap for punching (about 2" x 2") – Card 1

Parker's Patterns Designer Series Paper

Pattern 5b: 1 3-3/4" x 5" – Card 1

Other

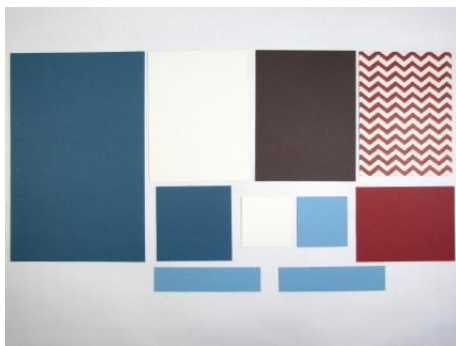
Medium Envelope – Very Vanilla (1)

Punches: 7/8" Scallop Circle, 2-3/8" Scallop Circle, 1" Circle, 1-3/8" Circle & 2-1/2" Circle

Big Shot w/ Multipurpose Platform (optional)

Chevron Textured Impressions Embossing Folder (optional)

Adhesives: SNAIL (20") & Stampin' Dimensionals (7)



1. Gather supplies listed.

Score 5-1/2" x 8-1/2" Not Quite Navy card stock at 4-1/4" along the 8-1/2" side.

Adhere 4" x 5-1/4" Very Vanilla card stock inside card.

2. Stamp inside of card and scrap Very Vanilla card stock with the "#1" stamp using Not Quite Navy ink.

Punch image on scrap with 7/8" Scallop Circle Punch.

3. Punch scrap card stock:

- Marina Mist 1-3/8" Circle
- Cherry Cobbler 1" Circle and 1-3/8" Scallop Circle
- Not Quite Navy 2-1/2" Circle



- Place Marina Mist strips and punched circle in the Chevron Textured Impressions Embossing Folder with one strip vertical and one horizontal.

Run folder through the Big Shot.



- Adhere Parker's Patterns Designer Series Paper layer onto Early Espresso card stock. Adhere both layers to card front.

Adhere banner strips beginning near the top left corner and angled down towards the bottom center and the right edge.



- Cut one end of each Marina Mist into banner or flag ends.



- Adhere layered medallion at an angle near top left of card front with Stampin' Dimensionals.



- Layer punched shapes by size to create a medallion. Use Stampin' Dimensionals under both Cherry Cobbler layers and the stamped 7/8" scallop circle.



- This bold card is perfect for Father's Day, congratulations, 1st birthday, or as a thank you to a coach or teacher.

Card 2 Instructions (Punch Strip) Stamping Imperfection



Stamps: Ciao, Baby!

Ink: Early Espresso & Cherry Cobbler

Early Espresso Card Stock

1 3-7/8" x 5-1/8" - Card 2

1 1-1/8" x 5" - Card 2

Scrap for punching (about 1" x 3") - Card 2

Crumb Cake Card Stock

Scrap for punching (about 2" x 3") - Card 2

Very Vanilla Card Stock

1 4" x 5-1/4" - Card 2

1 3-3/4" x 5" - Card 2

Scrap for punching (about 2" x 2") - Card 2

Cherry Cobbler Card Stock

1 5-1/2" x 8-1/2" - Card 2

1 1" x 5" - Card 2

Scrap for punching (about 2" x 2") - Card 2

Other

Punches: Curly Label & Petite Curly Label

Big Shot w/ Multipurpose Platform (optional)

Chevron Textured Impressions Embossing Folder (optional)

Adhesives: SNAIL (20"), Glue Dots (3) & Stampin'

Dimensionals (7)

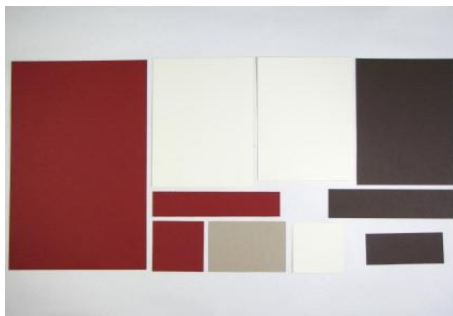
Other

Natural 7/16" Trim Ribbon (1-1/2")

1/8" Mini Brads (4)

Paper-Piercing Tool and Stampin' Pierce Mat

Medium Envelope - Very Vanilla (1)



1. Gather supplies listed.

Score 5-1/2" x 8-1/2" Cherry Cobbler card stock at 4-1/4" along the 8-1/2" side.

Adhere 4" x 5-1/4" Very Vanilla card stock inside card.

2. Stamp inside of card and scrap Very Vanilla card stock with the "love" stamp using Cherry Cobbler ink.

Clean stamp and then stamp "love" image twice on scrap Crumb Cake card stock.

3. Punch scrap card stock and stamped images with the Petite Curly Label Punch:

- Crumb Cake and Very Vanilla stamped images (3 total)
- 1 Cherry Cobbler
- 3 Early Espresso



4. Place 3-3/4" x 5" Very Vanilla card stock in the Chevron Textured Impressions Embossing Folder.

Run folder through the Big Shot.

5. Layer Cherry Cobbler strip onto Early Espresso strip.

Place punched shapes (except Cherry Cobbler) evenly across strip. Alternate horizontal and vertical placement. Start with edges and work towards middle.

6. Cut Cherry Cobbler punched shape in half vertically. Adhere to left edge of embossed layer about 1/2" from top edge.

Use Paper-Piercing Tool on Stampin' Pierce Mat to pierce a hole through center of punch.



7. Pierce the centers of the 3 Early Espresso punched shapes.

Place a 1/8" Mini Brad in each pierced hole, including the 1/2 Cherry Cobber shape.



8. Fold 1-1/2" Natural Trim Ribbon in half. Use a Glue Dot to adhere. Add Glue Dots to top and bottom of cut ends. Adhere behind embossed Very Vanilla layer.

Adhere to Early Espresso card stock layer and then to the card front.



9. This card is perfect for mailing to your sweetie for Valentine's Day or just to let someone know you love them.

Card 3 Instructions (Punch Grid) Stamping Imperfection



Stamps: Ciao, Baby!

Ink: Cherry Cobbler

Early Espresso Card Stock

1 4" x 5-1/4" – Card 3

Crumb Cake Card Stock

1 5-1/2" x 8-1/2" – Card 3

Very Vanilla Card Stock

1 3-3/4" x 5" – Card 3

Scrap for punching (about 2" x 2") – Card 3

Cherry Cobbler Card Stock

Scrap for punching (about 1" x 1") – Card 3

Not Quite Navy Card Stock

Scrap for punching (about 1" x 1") – Card 3

Daffodil Delight Card Stock

Scrap for punching (about 1" x 1") – Card 3

Parker's Patterns Designer Series Paper

Pattern 1a: Scrap for punching (about 1" x 1") – Card 3

Pattern 2a: Scrap for punching (about 1" x 1") – Card 3

Pattern 3a: Scrap for punching (about 1" x 1") – Card 3

Pattern 4a/b: Scrap for punching (about 1" x 2") – Card 3

Pattern 5a/b: Scrap for punching (about 1" x 2") – Card 3

Pattern 6a: Scrap for punching (about 1" x 1") – Card 3

Other

Natural 7/16" Trim Ribbon (14")

Medium Envelope – Very Vanilla (1)

Punches: Petite Curly Label

Big Shot w/ Multipurpose Platform (optional)

Chevron Textured Impressions Embossing Folder (optional)

Adhesives: SNAIL (24") & Stampin' Dimensionals (1)



1. Gather supplies listed.

Score 5-1/2" x 8-1/2" Cherry Cobbler card stock at 4-1/4" along the 8-1/2" side.



2. Place 3-3/4" x 5" Very Vanilla card stock in the Chevron Textured Impressions Embossing Folder.

Run folder through the Big Shot.



3. Adhere embossed layer to Early Espresso card stock layer.

Knot a 14" piece of Natural Trim Ribbon around left edge of layered card stock. Trim ends. Adhere layers to card front.



4. Punch 1" scraps with Petite Curly Label Punch. Punch 1" x 2" scraps twice. You'll have 3 card stock shapes and 8 Designer Series Paper shapes.



5. Stamp "Happy day" image on scrap Very Vanilla card stock with Cherry Cobbler ink.

Once dry, punch out with Petite Curly Label Punch.



6. Adhere punched shapes to right edge of card. Begin with the top right and bottom right corners and space the two between evenly.



7. Adhere two more shapes across the bottom and top edge.

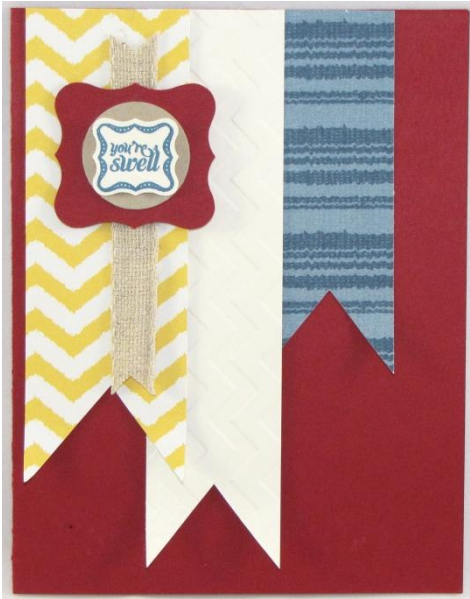


8. Fill in the center of the grid with the remaining punched shapes. Use a Stampin' Dimensional to pop-up the stamped image.



9. This bold and bright card makes a great birthday card for your favorite guy, tween, or child. It also makes a fun card to celebrate other happy occasions like graduations or promotions.

Card 4 Instructions (Banner) Stamping Imperfection



Stamps: Ciao, Baby!

Ink: Not Quite Navy

Crumb Cake Card Stock

Scrap for punching (about 2" x 2") – Card 4

Very Vanilla Card Stock

1 4" x 5-1/4" – Card 4

1 1-1/4" x 5-1/4" – Card 4

Scrap for punching (about 2" x 2") – Card 4

Cherry Cobbler Card Stock

1 5-1/2" x 8-1/2" – Card 4

Scrap for punching (about 2" x 2") – Card 4

Parker's Patterns Designer Series Paper

Pattern 4a: 1 1-1/2" x 4-1/2" – Card 4

Pattern 2a: 1 1-1/4" x 3-1/2" – Card 4

Other

Natural 7/16" Trim Ribbon (5")

Medium Envelope – Very Vanilla (1)

Punches: Petite Curly Label, Curly Label & 1" Circle

Big Shot w/ Multipurpose Platform (optional)

Chevron Textured Impressions Embossing Folder (optional)

Adhesives: SNAIL (16") & Stampin' Dimensionals (3)



1. Gather supplies listed.

Score 5-1/2" x 8-1/2" Cherry Cobbler card stock at 4-1/4" along the 8-1/2" side.

Adhere 4" x 5-1/4" Very Vanilla card stock inside card.

2. Stamp inside of card and scrap Very Vanilla card stock with the "you're swell" stamp using Not Quite Navy ink.

Punch stamped scrap with Petite Curly Label Punch.

3. Punch scrap Cherry Cobbler card stock with Curly Label Punch.

Punch scrap Crumb Cake card stock with 1" Circle Punch.



4. Place Very Vanilla card stock strip in the Chevron Textured Impressions Embossing Folder.

Run folder through the Big Shot.

Cut banner ends into the embossed strip as well as the 2 Designer Series Paper strips.



5. Adhere shortest banner even with top of card front and about 3/4" from right edge.

Layer embossed banner to the left and slightly overlapping the short banner.

Repeat with medium banner, leaving 1/8" on the left edge.



6. Fold one end of 5" piece of Natural Trim Ribbon lengthwise. Cut a banner end starting at the fold and angling scissors towards the end of the ribbon.

Repeat with other end so ribbon is about 3-1/4" long.

Adhere 1/4" from right edge of medium banner.



7. Adhere 1" punched circle centered on Cherry Cobbler punched Curly Label.

Use a Stampin' Dimensional to adhere punched greeting to center of layered circle.

Use Stampin' Dimensionals to adhere layered shapes over Natural Trim Ribbon and about 1/2" below the top of the ribbon.



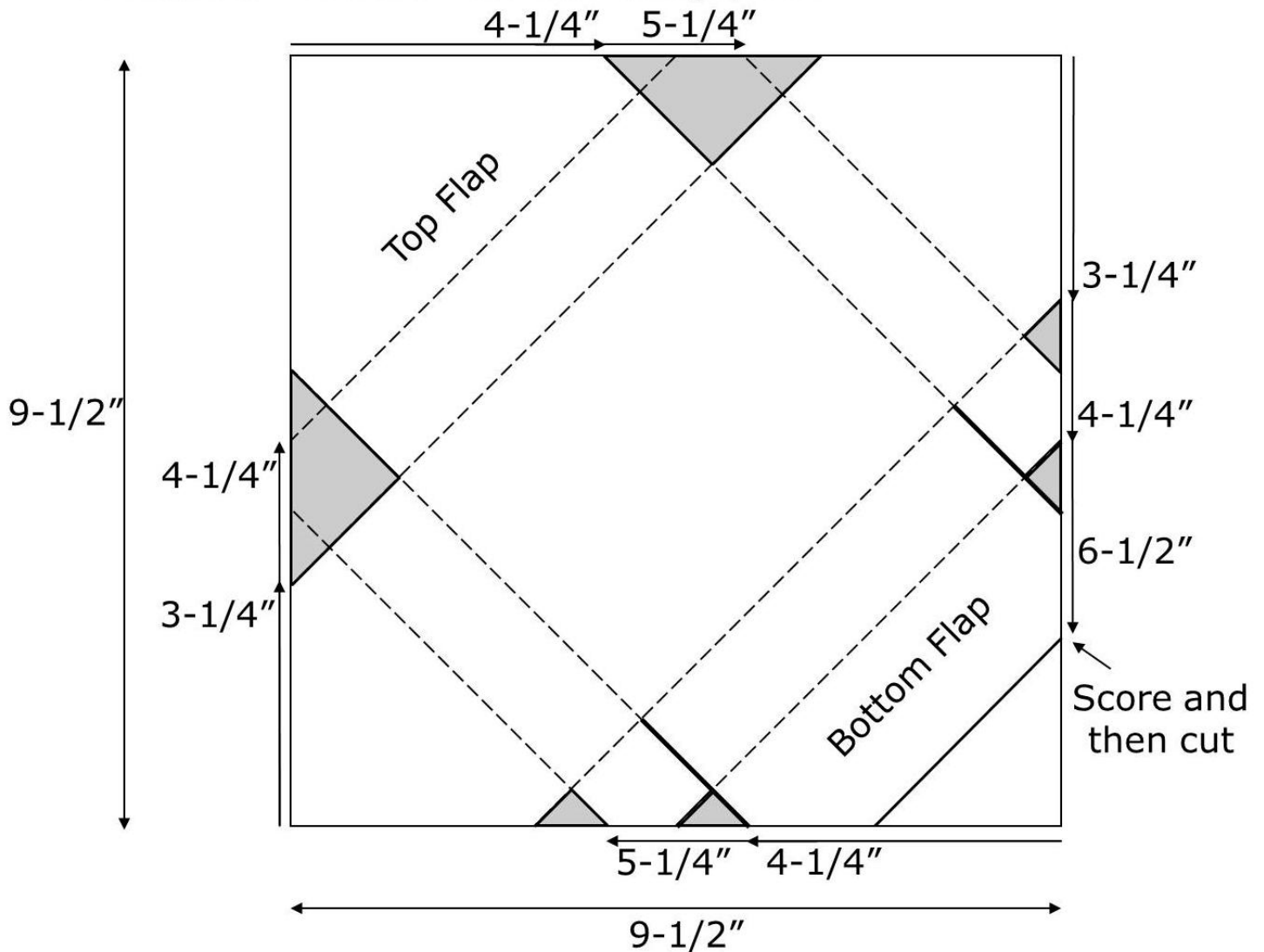
8. This fast and simple card has lots of bold flair. It will brighten the day of anyone lucky enough to receive it, and you don't even have to tell them how quick it was to make!

Templates Stamping Imperfection

Envelope-Style Card Box Template

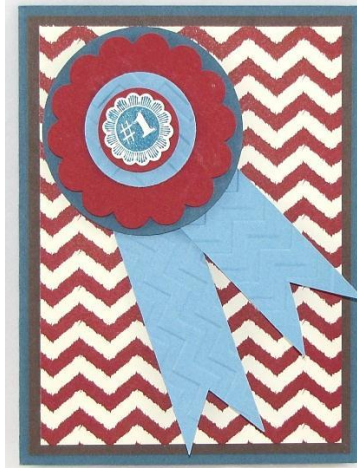
Instructions:

1. With the Simply Scored and Diagonal Plate score $9\frac{1}{2}'' \times 9\frac{1}{2}''$ card stock at $3\frac{1}{4}''$, $4\frac{1}{4}''$ and $6\frac{1}{2}''$.
2. Rotate card stock 180 degrees and score again only at $3\frac{1}{4}''$ and $4\frac{1}{4}''$.
3. Rotate the card stock 90 degrees and score at $4\frac{1}{4}''$ and $5\frac{1}{4}''$. Rotate the card stock 180 degrees and score again at the same measurements.
4. Score on dashed lines. Cut on solid lines. Cut out gray areas.



This template is not to scale, use measurements to guide you.

Detail Photos Stamping Imperfection



Card 1



Card 4



Group Photo



Card 1 (detail)



Card 4 (detail)



Front of Envelope



Card 2



Open Envelope Box



Card 2



Card 3 (detail)



Back of Envelope Box

Card 3

More Samples Stamping Imperfection

Don't you love it when you can use the same stamp set for many types of cards? Of course, we all do! The Ciao, Baby! stamp set makes great masculine cards, but it also makes adorable baby and child friendly cards. These samples re-create these projects using bright whimsical colors!

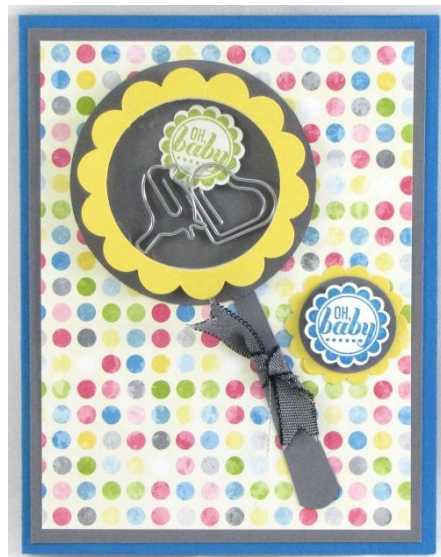
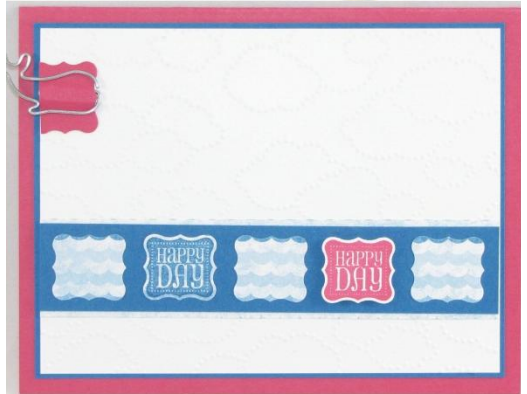
Stamp: Ciao, Baby! (Oh baby for baby card, etc.)

DSP: Sunshine & Sprinkles

Card Stock: Basic Gray, Daffodil Delight, Lucky Limeade, Marina Mist, Pacific Point, Melon Mambo, Whisper White

Ink: Lucky Limeade, Pacific Point, Melon Mambo

Accessories: Cloudy Day Textured Embossing Folder & Cute Clips (Elements #129939), Basic Gray/Basic Black 1-1/4" Two-Tone Ribbon, Shaker Frames, Window Sheets



Bonus Ideas from Stamping Imperfection

Keep these instructions and try creating sets with different color combinations, themes, and stamp sets for many personal styles.

Try these ideas or some of your own:

- Re-design any of the cards using other coordinating punches, such as the: Ticket Duo Builder, Small Heart/Full Heart, Bitty Butterfly/Elegant Butterfly, Small Oval/Extra-Large Oval, 3/4" Circle/1-1/4" Circle, 7/8" Scallop Circle/1-3/4" Scallop Circle, Postage Stamp from Little Labels Punch Pack/Postage Stamp, or Petite Curly Label/Curly Label.
- Re-create this set using your favorite Designer Series Paper and coordinating card stock.
- Change the colors on the Award Ribbon card for a baby boy's or girl's 1st birthday card.
- Use sports team colors or school colors to make the Award Ribbon card for coaches or teachers.
- Make this set into a gift by customizing the colors and Designer Series Paper to match your friends' favorite colors or styles.
- Give these cards as gifts to friends, neighbors, teachers, and co-workers.
- Step up these projects by heat embossing the stamped images with Stampin' Emboss Powder.
- Step up the cards and add more detail with Rhinestone Jewels, ribbon, brads, or buttons.
- Change up the look using different Textured Impressions Embossing Folders, such as: Argyle, Houndstooth, Stripes, Square Lattice, or Perfect Polka Dots.
- Dress up the Award Ribbon card using Denim Jean Ribbon, 1/2" Seam Binding Ribbon, 3/8" Stitched Satin Ribbon, 1/2" Scalloped Dots Ribbon, or 3/8" Ruffled Ribbon instead of the paper ribbons.

Lots of possibilities! Enjoy!