

Envelope Punch Board Party Favor



Supply List:



- (1) 5 inch square Whisper White Card Stock
- (1) 5 inch square Gold Foil Vellum (I used the hearts!)
- (1) Gold Foil Card Stock Pansy Punch Shape
- (1) Gold Foil Card Stock Petite Petals Punch Shape
- (1) Gold Foil Vellum Petite Petals Punch Shape
- Gold Baker's Twine
- Glue Dots
- Stampin' Dimensionals
- Textured Impressions Embossing Folder (I used Decorative Dots!)

Shop online: <http://mystampingstore.com>

Blog: <http://stampingimperfection.com>

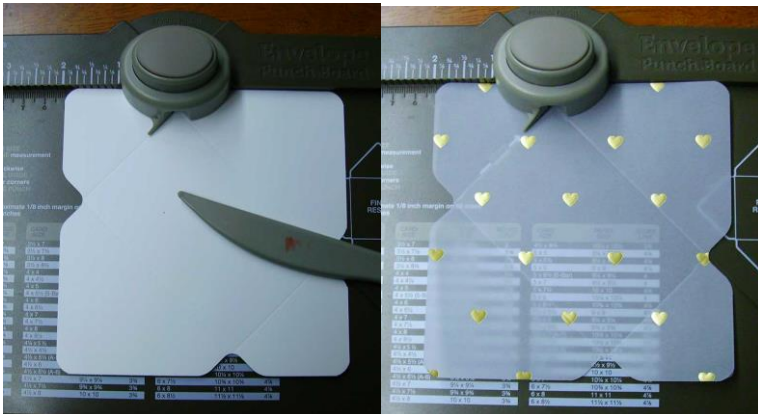
Big Shot

Envelope Punch Board

Step 1: Emboss the Gold Foil Card Stock Pansy Punch shape with the Textured Embossing Folder of your choice. (I used Decorative Dots!) Set aside.



Step 2: Punch and score the card stock and vellum squares using the measurements for the smallest size envelope on the Envelope Punch Board chart. Fold the card stock along the score lines and crease using the bone folder. Note: Do NOT crease the vellum yet.



Step 3: Randomly place Glue Dots on the back of the foiled parts of the vellum. Carefully position the scored Whisper White card stock over the vellum square... lining up the edges.



Shop online: <http://mystampingstore.com>

Blog: <http://stamingimperfection.com>

Step 4: Fold the card stock and vellum together... adjust the position of the vellum as needed to keep the two layers properly aligned. Crease the edges of the vellum with the bone folder. Add glue dots... where needed... to create the pouch.



Step 5: Place on Glue Dot about an inch down from the edge of the envelope. Wrap Gold Baker's Twine around the open pouch... securing both ends with Glue Dots. Add Stampin' Dimensionals to the back of the embossed Gold Foil Card Stock Pansy Punch shape.



Step 6: Add the Gold Foil Pansy Punch shape to the Envelope pouch. Use a Glue Dot to attach the Gold Foil Vellum Petite Petals shape to the Gold Foil Card Stock Petite Petals shape. Attach to the center of the Embossed Gold Foil Pansy Punch Shape as shown below.

